

Livingetc

20%
off
at
Habitat

THE HOMES MAGAZINE FOR MODERN LIVING

MAY 2011 £3.80

US \$8.99/AUS \$9.50/NZ \$9.95

livingetc.com

25 new looks for walls

Paint • paper • texture

Super-stylish GARDEN UPDATES

SUMMER'S prettiest PALETTE

*Gelato colours,
good enough to eat*

Shop for:
Range cookers
Bathing buys
Affordable art
Coffee tables
Outdoor chairs

Easy, elegant homes

**Step inside
and be inspired**

05 >

3/2011

Livingetc

EDITORIAL PUBLISHING

EDITOR Suzanne Imre
EDITOR'S PA Susanna Sanford (020 3148 7443)
DEPUTY EDITOR Neil McLennan
MANAGING EDITOR Sara Norrman

CREATIVE DIRECTOR Shannon Morton
ART EDITOR Melanie Brown
SENIOR DESIGNER Damien Breen
PICTURE EDITOR Nicola Rowe

CHIEF SUB-EDITOR Sarah Alcroft
DEPUTY CHIEF SUB-EDITOR Morag Bruce
SUB-EDITOR Jo Leevers
ACTING HOMES NETWORK EDITOR Stephanie Hendries
With thanks to Joanna Simmons

EDITORIAL PRODUCTION MANAGER Nicola Tillman
ART PRODUCTION DESIGNERS Clare Willetts, Phil Dunk

NEWS EDITOR Bethan Ryder
HOUSES EDITOR Mary Weaver
FEATURES EDITOR Claudia Baillie
ACTING FEATURES EDITOR Ginevra Benedetti
EDITORIAL ASSISTANT Victoria Cockell (020 3148 7432)

STYLE DIRECTOR Harriet Paterson
CONTRIBUTING STYLE EDITOR Claudia Bryant
STYLE ASSISTANT Jennifer Haslam (020 3148 7433)
STYLE COORDINATOR Hannah Franklin
With thanks to Roz Erskine
TO CONTACT US, EMAIL livingetc@ipcmedia.com

CONTRIBUTING EDITORS Mark Garside, Donna Hay
MAY'S WRITERS Andréa Childs, Jo Froude, Emma Kilbey, Rachel Leedham, Joanna Simmons, Damon Syson
MAY'S PHOTOGRAPHERS Adrian Briscoe, Chris Court, Antony Crolla, Jake Curtis, William Meppem, James Merrell, Birgitta Wolfgang Drejer, Polly Wreford, Mel Yates
MAY'S STYLISTS Marianne Cotterill, Julia Mincarelli, Kate Nixon, Justine Poole

CHAIRMAN AND CHIEF EXECUTIVE Sylvia Auton
MANAGING DIRECTOR Jackie Newcombe
PA TO MANAGING DIRECTOR Amy Ransom
PUBLISHING DIRECTOR Yvonne Ramsden
PUBLISHER Lynsey Bushell
PA TO PUBLISHING DIRECTOR AND PUBLISHER Alicia Joseph (020 3148 7667)

MARKETING MANAGER Victoria Tinsley (020 3148 7690)
CIRCULATION MANAGER Ben Oakden (020 3148 3471)
INTERNATIONAL BUSINESS DEVELOPMENT MANAGER Michael Garlick (020 3148 3584)
PR MANAGER Kaye Woodhouse (020 3148 7682)

SOUTHBANK GROUP AD DIRECTOR Alex Russell (020 3148 7570)
AD DIRECTOR Joanne O'Hara (020 3148 7642)
AD DIRECTOR'S PA James Zaman (020 3148 7641)
AD MANAGER Sharon Goode (020 3148 7631)
DEPUTY AD MANAGER Kate Bragazzi (020 3148 7627)
ADVERTISING ENQUIRIES 020 3148 7643
INTERNATIONAL/LUXURY ACCOUNT MANAGER Carole Bunce (020 3148 7620)
ACCOUNT MANAGER Robeela Hamid-Ali (020 3148 7632)
DISPLAY SALES EXECUTIVE Svanitha Mann Barlow
HEAD OF AGENCY SALES Kieran Killeen (020 3148 7603)
CREATIVE SOLUTIONS MANAGER Sue Valentine (020 3148 7630)

DIGITAL AD DIRECTOR Kristy Houtman (020 3148 7621)
PROJECT MANAGER Wendy Caller (020 3148 3614)
INNOVATOR AD MANAGER Zoe Freeman (020 3148 3707)
LONDON SALES MANAGER Ruth Roscorla (020 3148 7639)
ITALIAN OFFICE Studio Villa, Graziamaria Grillo, Anne Hamro (+39 0231 1662, graziamaria@studiovilla.com)
DANISH OFFICE Ulrik Brostrom (+45 3385 3002 ulrik.brostrom@jbmmedia.dk)
SPANISH OFFICE Luchiano Gotch (+34 9131 99015 luchianogotch@spectramedia.es)
CLASSIFIED SALES DIRECTOR Sharon Kirby (020 3148 2601)
CLASSIFIED SALES MANAGER Howard Jones (020 3148 2535)
REGIONAL AD ENQUIRIES 0161 872 2162
GROUP PRODUCTION MANAGER Samantha Bishop
PRODUCTION MANAGER Alan Taylor
SUBSCRIPTIONS MARKETING MANAGER Diane Hornby (020 3148 6295)
SYNDICATION Efi Mandrides (020 3148 5485)

Contributors



Jake Curtis
Photographer,
Shopping
Focus: *Bathing*
(p126)

Favourite piece of Danish design? Ane Christensen's Negative Series copper bowls are breathtakingly beautiful.
What app would change your life? One that could add more hours to my day.
Pastels or monochrome? Pastels spell Eighties fashion disasters to me, so I'd go for noncommittal grey.
My perfect spring-time walk is... along the coast near Walberswick in Suffolk, finishing with a pub lunch.
Favourite building? Mies Van Der Rohe's Barcelona Pavilion for its clean lines and use of marble and glass. Couldn't live in it, though.



Marianne Cotterill
Stylist, *Gelato*
Colours (p49)

Favourite piece of Danish design? Hans J Wegner's Wishbone chair is a classic – comfortable and stylish.
What app would change your life? I'm forever getting lost on my way to locations, so a talking GPS would sort me out.
Pastels or monochrome? Both together: graphic black and white can really anchor other colours.
My perfect spring-time walk is... in the Jordanian mountains, carpeted in wild flowers in amazing colours.
Best shoot location? A house in Hawaii, where we watched the sunset with Mai Tais.




Jonás Bjerre-Poulsen
Architect of the house in *Designed For Life* (p105)

Favourite piece of Danish design? I don't believe in favourites, but I admire Cecilie Manz's minimal and poetic expression.
What app would change your life? One that sourced the best programmes and lectures on design and architecture. It would make my commute much more interesting.
Pastels or monochrome? Monochrome. We have at least 100 nuances of grey in our home.
My perfect spring-time walk is... through the streets of Rome, when the mimosas are flowering.

MISSED LAST MONTH'S ISSUE? Contact the Back Issues Department, PO Box 772, Peterborough PE2 6WJ, 01733 385170 mags-uk.com/ipc

housetohome.co.uk/directory
the only interior decoration directory you'll need

recycle
When you have finished with this magazine please recycle it.



Home profile

THE OWNERS Nicki Sørensen, a business development executive, his wife, Anne, a lawyer, and their two boys, Alexander, four, and Nikolaj, two.

THE PROPERTY A Fifties multi-level house with a new extension near Copenhagen, Denmark. There's a living room, dining room, study, kitchen, utility room, three bedrooms and two bathrooms. >

DESIGNED for life

It ticks all the style boxes – cool architecture, iconic furniture and modern pops of colour – but Anne and Nicki's home is also the ultimate family-friendly zone

WORDS JOANNA SIMMONS | PHOTOGRAPHY BIRGITTA WOLFGANG DREJER



* ***What they did***

- Extended and remodelled the existing Fifties property, preserving the original central staircase and one bedroom.
- Replaced the exterior walls and windows.
- Relocated the front door.
- Created built-in storage in the kitchen, master bedroom and bathroom.
- Laid new oak flooring throughout.

Step inside Anne and Nicki Sørensen's sleek house and the chances are you'll be greeted by children sliding down the short staircases on mattresses. 'We pad the floor with pillows and blankets,' says Anne. 'The boys love it.'

Other favourite games for Alexander, four, and two year-old Nikolaj are chasing round the dining table and playing knights on their bunk beds, also known as 'the castle'. 'They have the run of the house,' says Nicki, 'but the layout, with rooms flowing off a central hallway, means they're never far from sight.' The open-plan design is grown-up friendly, too. 'It's great for socialising, and if we want privacy, we use the living room, which is a more defined space.'

While the family-orientated layout was one of the features that attracted the couple to the house, its location – in Fredensborg, near Copenhagen – was an added bonus. 'It's a great place to live. It has everything you need for a growing brood – good schools, friendly neighbours, lakes and forests close by, and it's only a 20-minute drive to the city,' says Nicki.

Designed by Jørn Utzon – the Sydney Opera House is another example of his work, so we're talking an eye for pleasing lines – the house had a superb pedigree, but it wasn't big enough. >



DINING ROOM

'This space is so flexible,' says Nicki. 'It's great for parties, then we use lighting to create cosy pockets for smaller gatherings.' The table is the same length as the kitchen wall, so sight lines down the stairs (see page 105) are not obstructed. A wall of glazing makes for uninterrupted views, and made more sense than bi-folding doors given the unpredictable Danish weather.

Get the look Tablemakers sells tables like this. Buy Arne Jacobsen's Egg chair for Fritz Hansen and Hans J Wegner's Wishbone chairs for Carl Hansen & Son from Aram Store. This is the Ikea PS Maskros light fitting. The Shuffle side table (just seen) is by Mia Hamborg at 95% Danish. The wooden tableware is from Hanabloomst. The Bulky tea set is by Muuto.

LIVING ROOM

'This is very much a family space,' says Nicki. 'It connects the bedrooms to the rest of the house, so you often walk through, or spend time here at the end of the day.' The built-in fireplace is visible from both sides of the dividing wall.

Get the look Buy PK22 lounge chairs by Poul Kjærholm for Fritz Hansen from Aram Store. The PK61 table, also by Poul Kjærholm for Fritz Hansen, is available from Chaplins. Arne Jacobsen's AJ floor lamp for Louis Poulsen is available from The Lollipop Shoppe. Morsø sells built-in wood-burning stoves like this.



The challenge, then, was to preserve its bones while doubling its size. 'We couldn't approach it as a new-build,' says Nicki. 'We had to find a clever way to marry the old and the new.'

With this in mind, the couple enlisted the help of architect Jonas Bjerre-Poulsen of Norm Architects. 'He was the only one who was strong enough to challenge my opinions,' says Nicki, 'and he was always right.' The Sørensens and Jonas finally settled on a design that respected the original building but added vital extra space. 'Because the additions were inspired by the existing property, people assume it was always this way,' says Nicki.

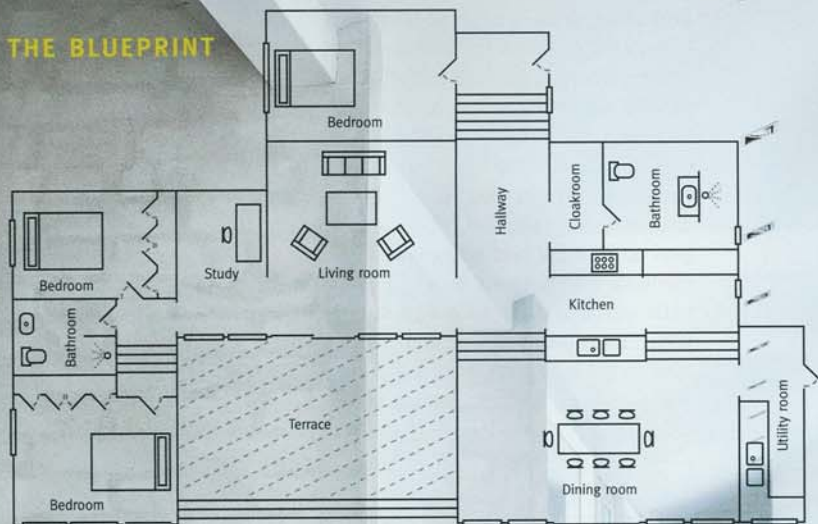
The family moved out for eight months and the extension work was finished with barely a hitch. The only stumbling block was over the huge windows that now run the length of the dining room, living room and master bedroom. 'I had ordered a massive amount of bi-fold doors – 10 for the dining room alone – so the rooms could open onto the garden, but Jonas convinced me their frames would ruin the view,' says Nicki. 'He was right, of course. And now we are able to enjoy uninterrupted views all year. We wouldn't have opened the bi-folds very often anyway – Danish summers aren't great.'

Although the house has space for lorry loads of furniture, the couple have steered an uncluttered course. 'I'm drawn to space as well as what you fill it with,' says Nicki. That said, he and Anne wanted the house to feel comfortable, not austere, so chose a background palette of off-whites and greys, rather than pure white, and warm oak flooring. 'Lately, we've had fun adding some design classics in pastels that have enlivened the space even more,' says Anne.

While their architect helped them create uninterrupted views onto the garden, the couple enjoy their home's inside vistas just as much. A house where looking in is as good as looking out – that's a true testament to its beauty.

See more of Norm Architects' work at normcph.com. >

THE BLUEPRINT



KITCHEN

'The kitchen was the biggest experiment of all,' says Nicki. 'It's in the middle of the house, but it's very subtle.' Nicki and Anne can talk to guests in the adjacent living room while cooking, but messy dishes stay out of sight once everyone sits at the dining table down the short staircase.

Get the look The worktops are Corian. The oak flooring is by Haro. For kitchen units like this, look at the Urban Lineaire collection at Magnet.





BATHROOM

As with elsewhere in the house, a room divider takes the place of a separating wall in the bathroom. A shower is tucked behind this one, with a wide bespoke basin extending across its width. The couple chose these black porcelain tiles 'because they have a beautiful texture'.

Get the look Find black porcelain tiles at Surface Tiles. Alternative Plans sells a good range of wide basins like this. Buy an illuminated mirror at Bathstore.

MASTER BEDROOM

The giant bed is the star of the room. 'The kids sometimes come in with us, so we need a bed that can take four people,' says Nicki. The couple like to keep their bedroom peaceful and uncluttered, just like the rest of the house.

Get the look The Mega Dot quilt and Dot cushion are by Hay, available at SCP. Buy Arne Jacobsen's Swan chair for Fritz Hansen from Geoffrey Drayton.

For stockist details, see page 196

* Home truths

Best thing about summer in Denmark? *Nicki:* Long, light days and the kids running around in the garden. *Anne:* Heading off to my parents' summerhouse, right on the water.

Favourite city? *Nicki:* Rome. It's a great mix of history, good food and lovely people.

Early riser or night owl? *Anne:* I like my sleep at both ends of the day. Nicki is the one who gets up with the kids and goes to bed last.

Favourite way to spend Sunday? *Nicki:* On the patio with friends, sipping a glass of white wine.

Which track gets you dancing? *Nicki:* It's not easy to get me up on the dance floor, but *Walking On Sunshine* might just do it.

